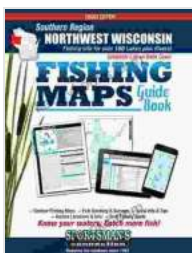


Northwest Wisconsin Fishing Map Guide Southern Region

Prepare to embark on an extraordinary angling expedition in the pristine wilderness of Northwest Wisconsin's Southern Region. With the release of the indispensable 'Northwest Wisconsin Fishing Map Guide Southern Region', the hidden gems of this aquatic paradise are now unveiled, empowering you to cast your line with confidence and experience the thrill of reeling in the catch of a lifetime.

Navigating the Guide's Comprehensive Content

This meticulously crafted guide serves as your trusted companion, providing an unparalleled level of detail for planning and executing successful fishing trips. With over 300 lakes and rivers meticulously mapped, you'll gain instant access to valuable insights such as:



Northwest Wisconsin Fishing Map Guide - Southern Region

by Sportsman's Connection

★★★★☆ 4.7 out of 5

Language : English

File size : 52648 KB

Screen Reader : Supported

Print length : 48 pages

Lending : Enabled



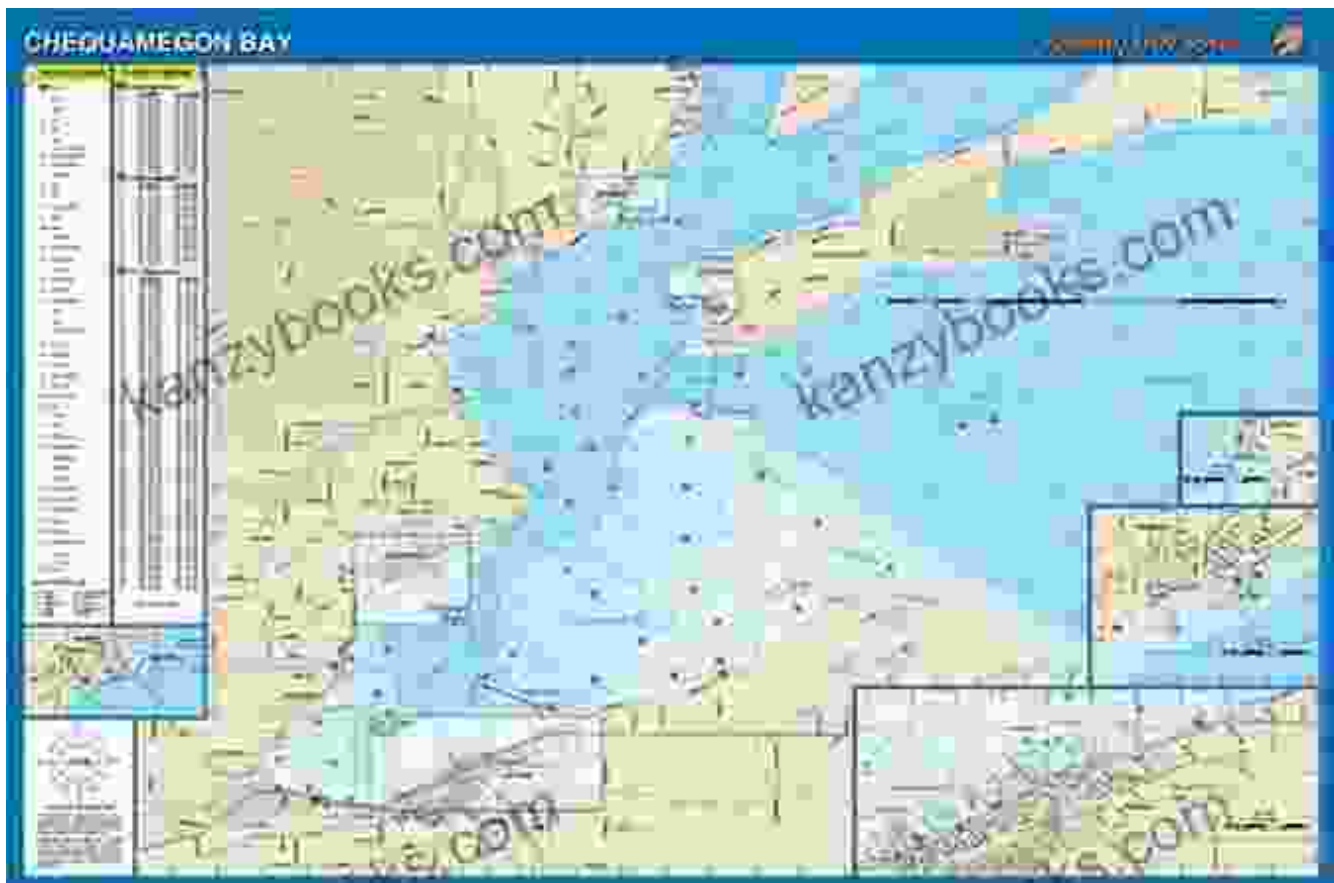
- Water depth contours
- Lake bottom composition

- GPS coordinates for pinpoint accuracy
- Detailed descriptions of each water body, including fish species and recommended techniques
- Expert tips and strategies for maximizing your fishing experience

Unveiling Northwest Wisconsin's Southern Region for Anglers

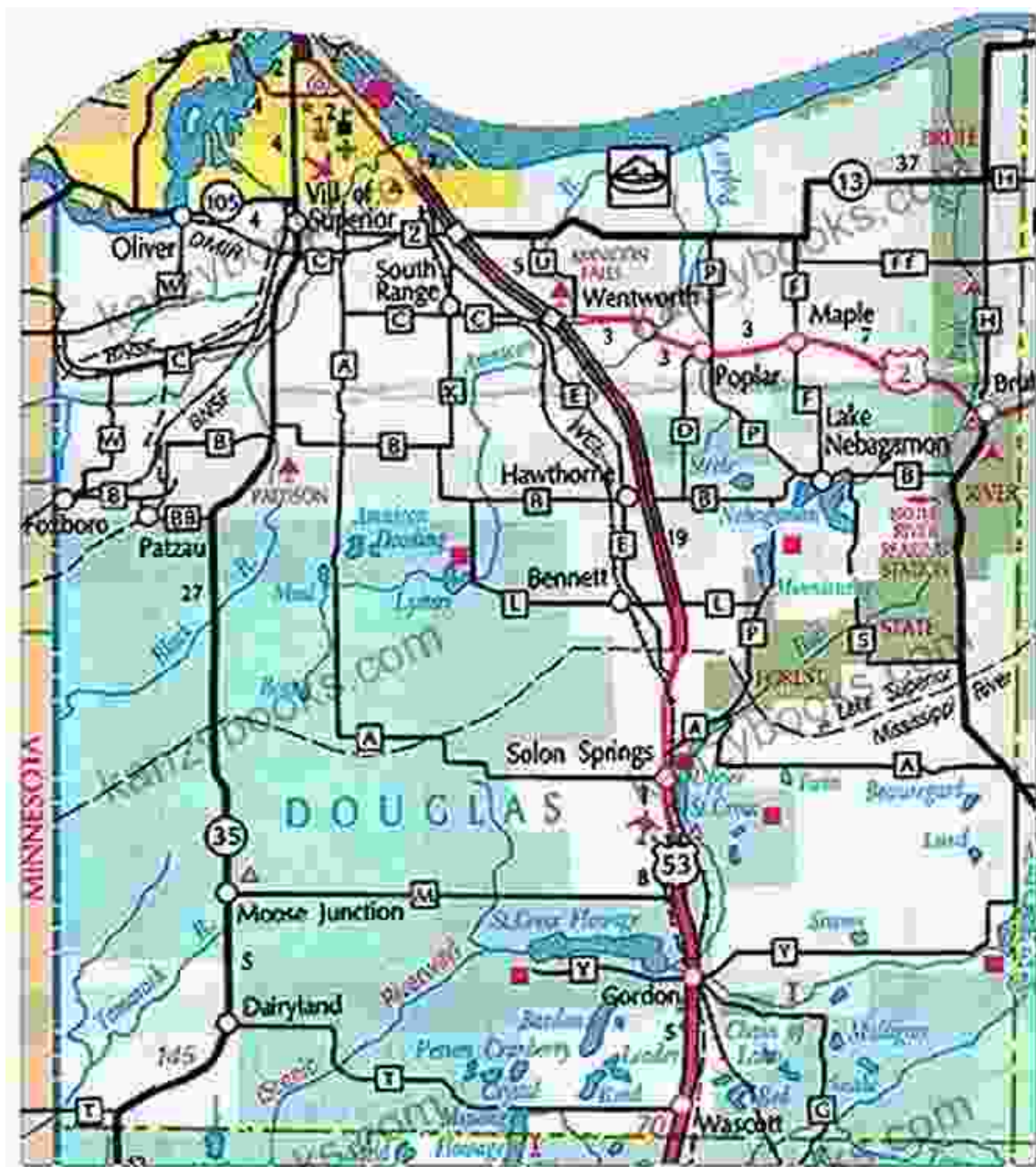
The Southern Region encompasses a vast and diverse array of fishing destinations, each offering its own unique charm and challenges. From the sprawling expanses of Lake Superior to the secluded coves of inland lakes, this guide unlocks the secrets to unlocking angling success throughout the region:

Bayfield County:



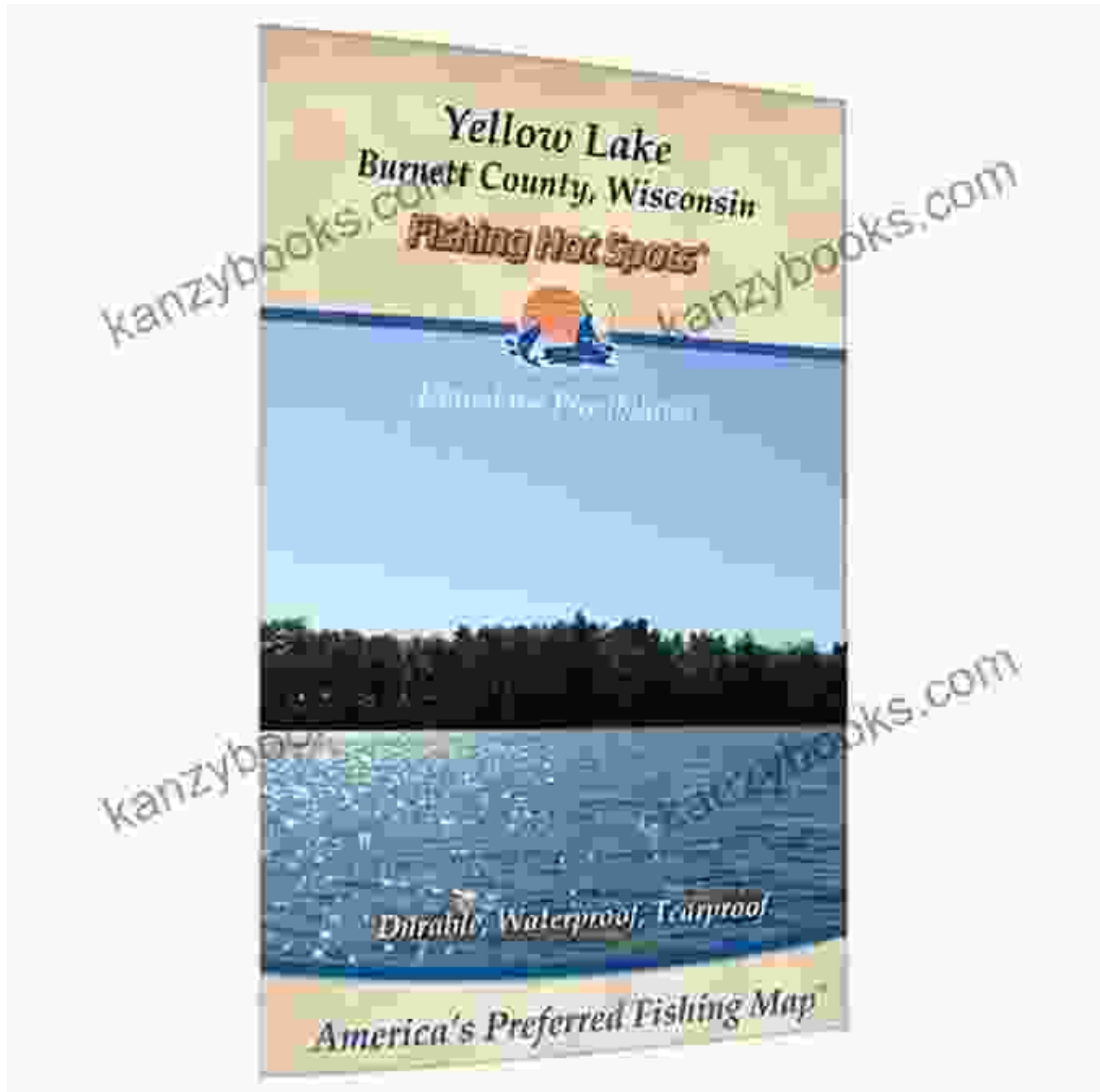
Free Downloading the shores of Lake Superior, Bayfield County entices anglers with a variety of species, including salmon, trout, and walleye. Explore the crystal-clear waters of Chequamegon Bay for a chance to land a trophy-sized salmon, or cast your line in the swiftly flowing waters of the Brule River for a challenging trout fishing experience.

Douglas County:



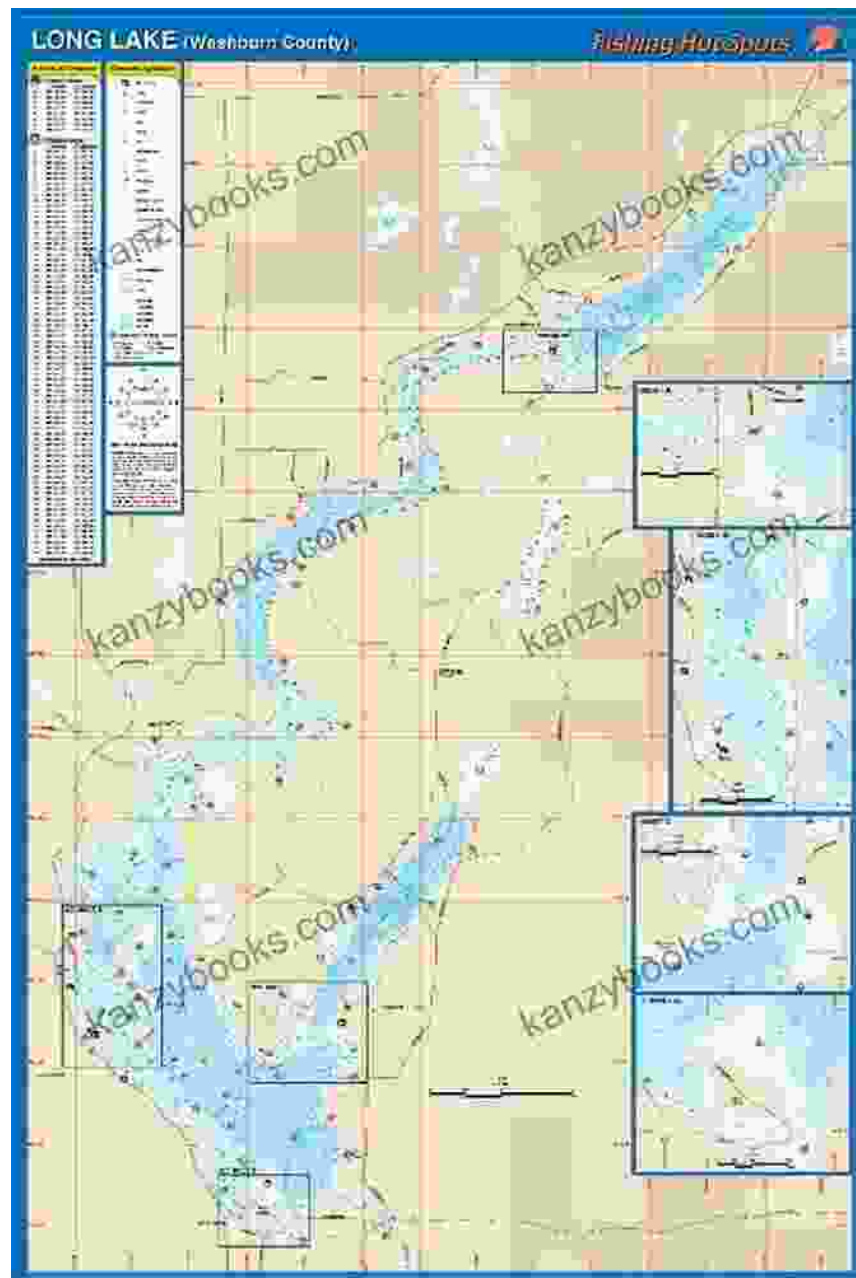
Nestled in the heart of the region, Douglas County boasts an abundance of lakes brimming with bass, panfish, and northern pike. Head to Lake Nebagamon for a serene fishing getaway, or venture into the remote waters of the St. Croix Flowage for an unforgettable wilderness experience.

Burnett County:



Free Downloading the St. Croix River, Burnett County is a haven for anglers seeking solitude and trophy catches. The Namekagon River meanders through the county, offering excellent opportunities for fly-fishing and smallmouth bass fishing. Explore the hidden gems of Big Wood Lake or Bone Lake to discover the unspoiled beauty of Northwest Wisconsin.

Washburn County:



Perched on the western edge of the region, Washburn County is renowned for its exceptional muskie fishing. The pristine waters of the Yellow River and Birchwood Flowage are home to some of the largest muskies in the state. Venture into the depths of Lake Owen or Long Lake to test your skills and experience the thrill of battling these prehistoric giants.

Maximize Your Fishing Adventures with Essential Tips

Beyond mapping out the waterways, the 'Northwest Wisconsin Fishing Map Guide Southern Region' also provides a wealth of valuable insights and expert tips to enhance your fishing experience:

Plan Ahead:

Before embarking on your excursion, take the time to study the guide and identify potential fishing spots that align with your target species. Note the depths, contours, and bottom composition to develop a strategic approach for each water body.

Be Prepared:

Pack appropriate gear for the conditions and target species. Bring an assortment of lures and baits to adapt to changing fishing patterns. Don't forget essential items such as rain gear, sunscreen, and insect repellent.

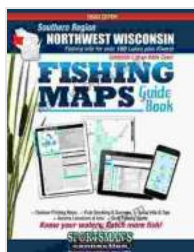
Respect the Environment:

Adhere to catch-and-release practices to preserve the health of the fisheries. Dispose of trash responsibly and leave the environment undisturbed. Remember, you are a guest in these natural spaces.

Stay Safe:

Always prioritize safety while on the water. Wear a life jacket, be aware of weather conditions, and let someone know your itinerary before heading out.

The 'Northwest Wisconsin Fishing Map Guide Southern Region' is the ultimate resource for unlocking the angling treasures of this pristine wilderness. With its comprehensive mapping, detailed descriptions, and expert tips, this guide empowers you to plan and execute successful fishing adventures throughout the region. Whether you're a seasoned angler or a novice seeking an unforgettable experience, this guide will lead you to the hidden gems and trophy catches that await in Northwest Wisconsin's Southern Region.



Northwest Wisconsin Fishing Map Guide - Southern

Region by Sportsman's Connection

★★★★☆ 4.7 out of 5

Language : English

File size : 52648 KB

Screen Reader : Supported

Print length : 48 pages

Lending : Enabled





Getting High Fat Diet Easily Using Keto Fat Bomb Cookbook

Unveiling the Power of Fat Bombs The Keto Fat Bomb Cookbook empowers you with a treasure trove of knowledge and tantalizing recipes, igniting a culinary...



Are You Cryin' Brian? Find the Inspiration and Humor in Life's Everyday Moments

Life can be full of surprises. The good kind, the bad kind, and the kind that make you wonder what the heck just happened. In Are You Cryin' Brian?, Brian...